



## Install and User Manual



**MTB Cab & Chassis  
Flatbed & MP Bed**

# Flatbed Cab & Chassis Parts Kits

---

## Wiring

- \*Wiring Harness:** (1) Part# MAR-200 (All Bed Main Rear Harness) (1) Part# MAR-750 (Pigtail) ( ) Hard Wire MAR-905 "see Page 6 for wiring"
- \*No Headboards Lights:** ( ) (1) Part# MAR-400 (I.D. Harness) **\*Lights in Headboards:** ( ) (1) Part# MAR-201 (Headboard Harness)

## Mud Flap Kits

- MK-MF-DW-FB** For Dual wheel trucks "this does not include mud flaps only the hanger and bolts"
- MK-MFH-SW-FB** For single wheel trucks "this does not include mud flaps only the hanger and bolts"
- MK-MF-DW-01** dual wheel flap 20x30 1/4"Thick
- MK-MF-DW-02** dual wheel flap Anti sway 20x30 1/2" Thick Martin logo
- MK-MF-SW-01** Single wheel flap 14x20 1/4"

## Mounting Kits

- MK-CC-100 + MK-RH-100 + MK-GN-100 + Martin Rear Hitch and Martin Gooseneck Hitch.** See Drawing A
- MK-CC-101 + MK-RH-100 + Rear Hitch** See Drawing B
- MK-CC-102** Use if truck does not get any hitches. See Drawing C

# Cab & Chassis Trucks step by step install Guide

**Step 1:** Complete all the wiring on the flatbed (Ready to connect to truck)

**Step 2:** If you have toolboxes, mount the toolboxes to the mounting brackets that are or have to be welded to the underside of the body.

**Step 3:** Pre-fit Flatbed on truck frame. At the rear of the frame use the supplied shear plates OR rear Hitch to attach the back of the flatbed. At the front and the center of the flatbed use the supplied mounting plates Or Gooseneck Hitch to attach flatbed to truck frame. See page3-4or5.

**Step 4:** Connect the wiring harness pigtail to the truck (Refer to Martins Wiring diagram page 6) some models are hardwired and some have plugs.

**Step 5:** Install Mud flaps on the tracks under bed (Supplied by Martins see page 6).

**Step 6:** Connect Fuel Filler hose, Reuse existing filler neck, and Bolt the filler neck to the box welded on the side of the flatbed. Then install a new hose to the fuel tank (New hose not included)

**Step 7:** It is highly recommended to have a local State inspection Mechanic inspect your truck before being put in service.

**Bumper requirements:** A Bumper needs to be added if original truck bumper is removed, maximum of 30" off the ground, 18" in From Each Side, and 24" Max under bed from tail.

**Hitches:** Refer to Installation guide. (If hitch supplied by Martins).

**Backup Sensors:** Relocate sensors to rear light skirt on flatbed  
(Contact Martins if needed).

**Backup camera:** Camera will need to be relocated above the license plate on light skirt. Professional advice is recommended if wires need extended. (contact martins if needed).

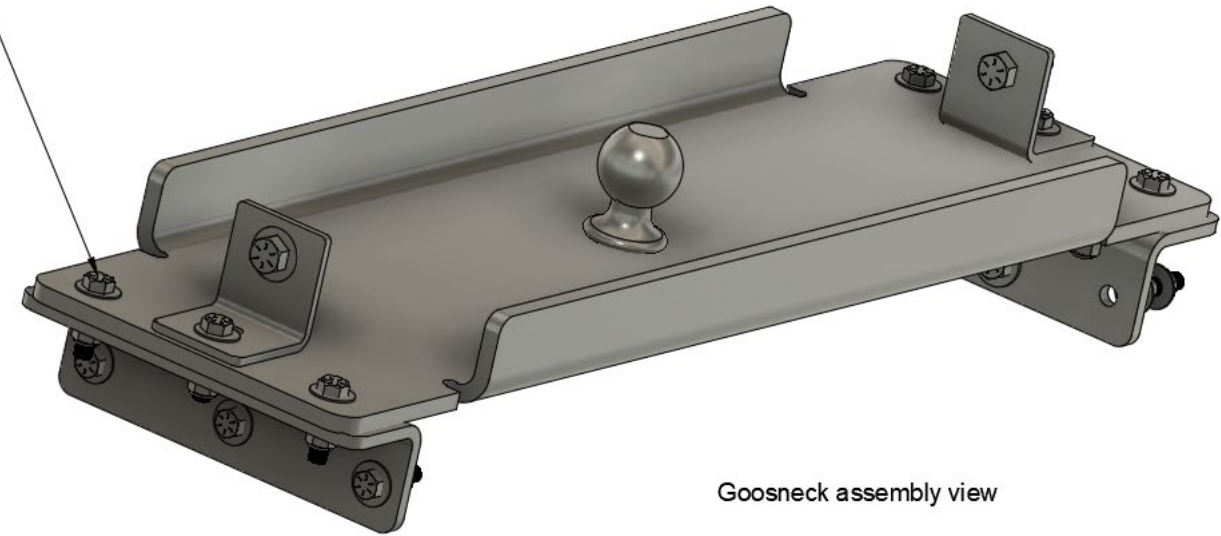
**Disclaimer:** These Instructions are a general guide. Martins Truck Bodies is not responsible for the installation of your truck body. GM, Ford & Dodge frames are all different. It is highly recommended to have your truck looked at by a local state inspection garage after you have completed the installation.



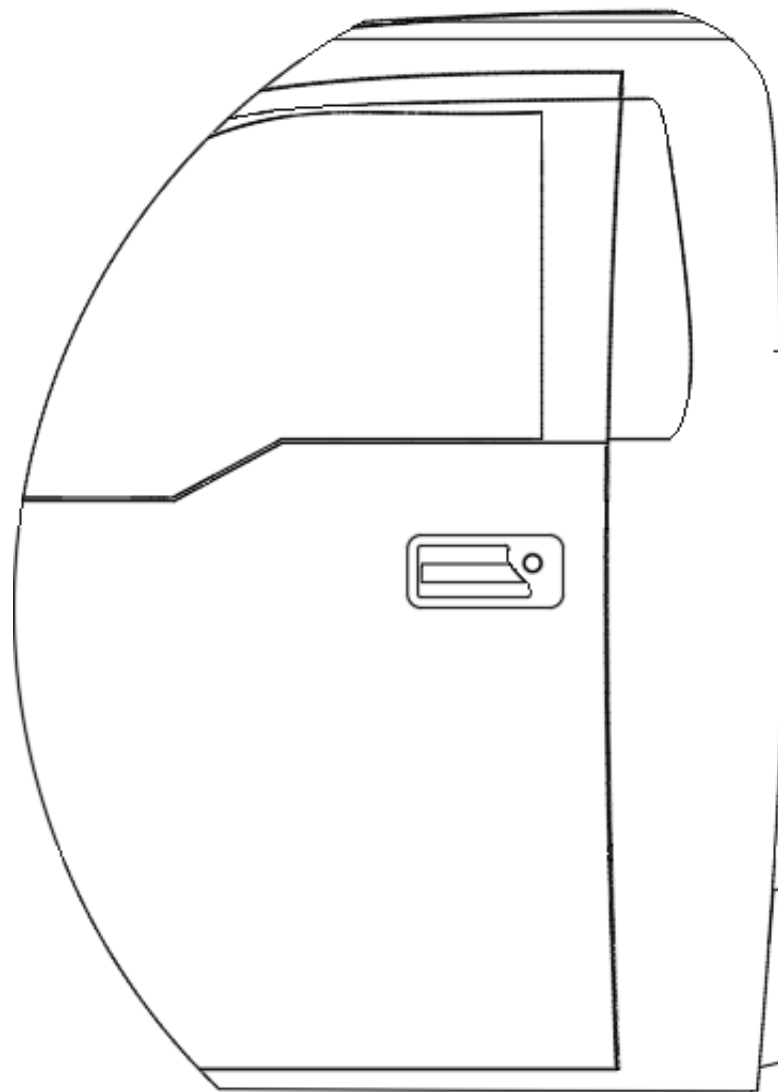
# Drawing A

For Bodies with martin rear and gooseneck hitch

(14)  $\frac{5}{8}$  x 2 bolts  
with lock nuts and washers



Goosneck assembly view



Leave Approximately 2" cab gap

Center of goosneck ball shold be 60" back from cab

FBP-019 Hold down plate  
Keep as close to the front as possible

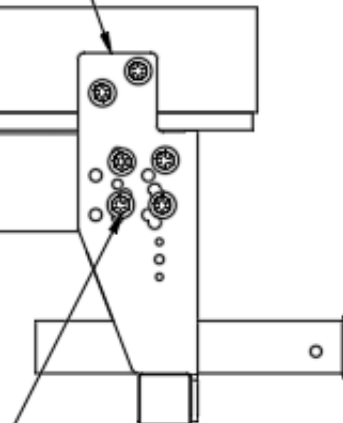
(4)  $\frac{5}{8}$  x 2 bolts  
with lock nuts and washers

Goosneck assembly

bolt mudflat assembly  
to track on the bed

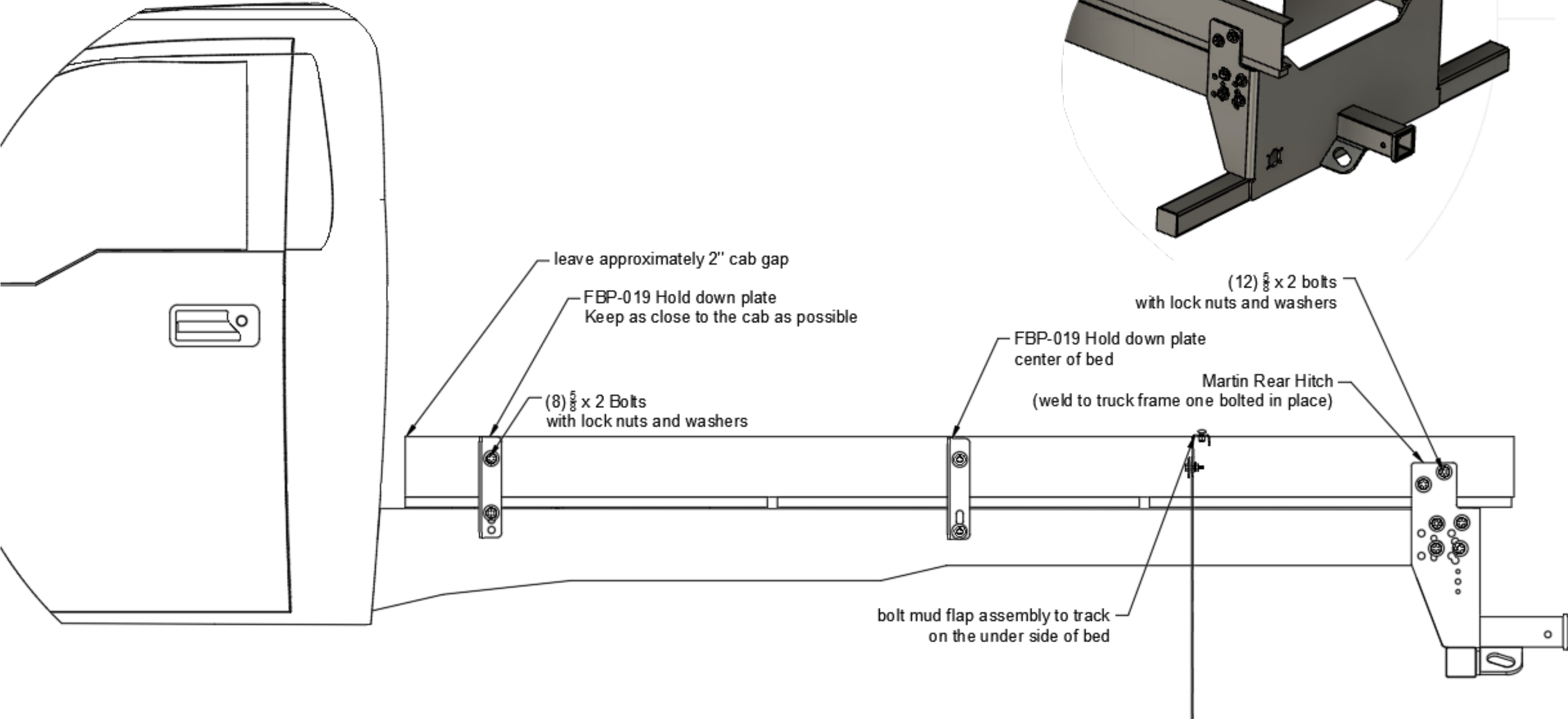
Martin Rear Hitch Plate  
( weld to truck frame once bolted in place)

(12)  $\frac{5}{8}$  x 2 bolts  
with lock nuts and washers



# Drawing B

For bodies with Martin rear hitch.

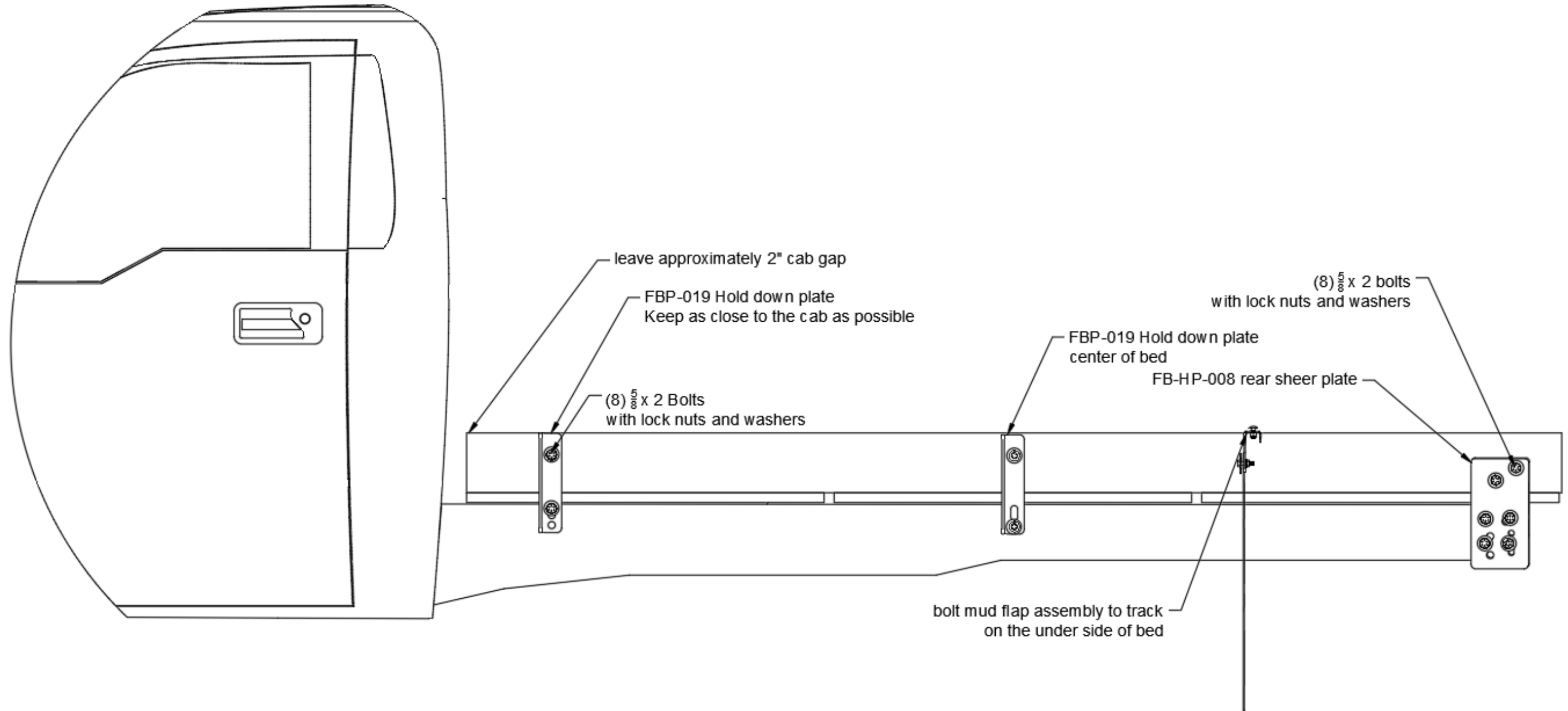






## Drawing C

For bodies Without Hitches

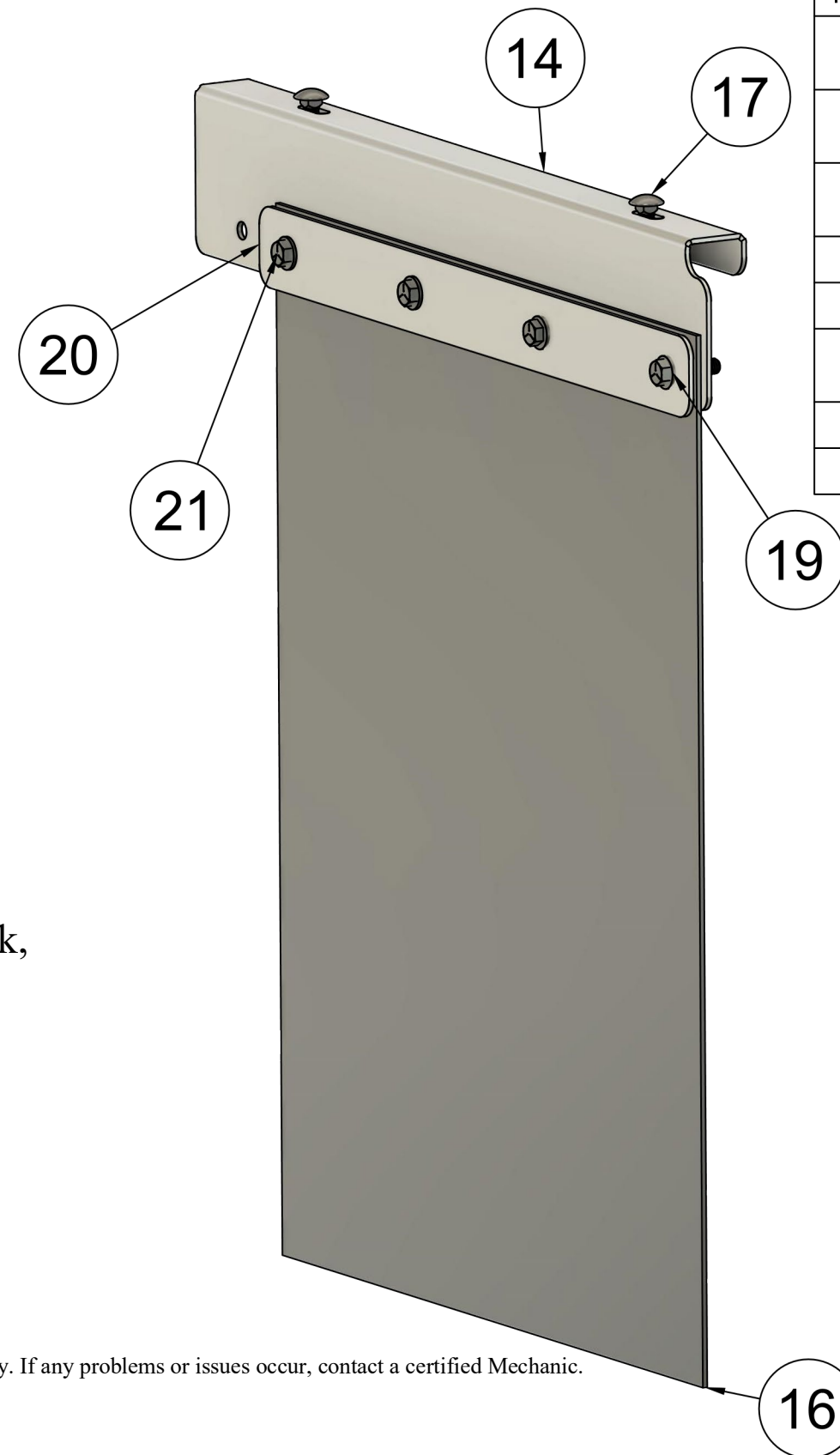


## Truck Body Wiring Color Codes

Brown - Marker Lights  
 White - Ground  
 Red - Reverse  
 Yellow - Left Turn  
 Green - Right Turn  
 Black - Left Brake  
 Blue - Right Brake

Note: If the your Brake Lights & Turn Signal are in one wire on your truck,  
 Left –side Yellow & Black and Right – Side Green  
 & Blue will need to be spliced together.

**Disclaimer:** These wiring Color Codes are only suggestions. Martin Truck Bodies is not responsible to properly wire your truck body. If any problems or issues occur, contact a certified Mechanic.



PARTS LIST		
ITEM	QTY	PART NUMBER
14	1	FBAP-058DS DW MUDFLAP HANGER
16	2	SRI2030A2W DW MUD FLAP
17	4	3/8X1 CARRIGE HEAD BOLT
18	5	3/8 LOCK NUT
19	11	3/8 FLAT WASHER
20	1	FBAP-061 20" MUD FLAP BRACKETS
21	8	3/8X1 1/2 BOLT
22	8	3/8 FLANGE NUTS

Mudflap assembly

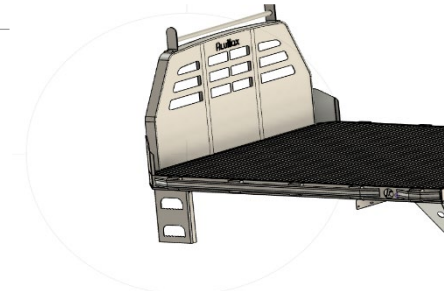
# Additional Options to add on your MTB Flatbed



Removable Side board



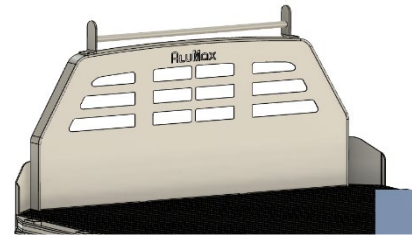
Gooseneck  
Access Door



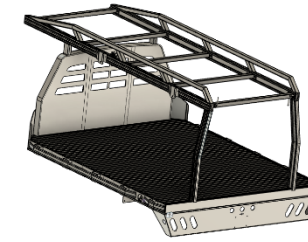
Bolt on two rung step



D Rings



Bolt on ladder Guide



Ladder racks



Aluminum Diamond Toolbox Size  
are 16x14x12 for 88" & 80"  
bed 12x18x24 and 12x18x30 for  
single rear wheel trucks 18x18x24  
and 18x18x30 for dual rear wheel



**Stainless steel Bawer toolbox**  
Sizes are (18x18x18) (18x18x24)  
(18x18x30) For dual rear wheel  
trucks



Aluminum Top Deck  
Diamond toolbox



**Weld on tool box mounting brackets**  
Dual wheel & single wheel