



Install and User Manual



Skirted Flatbeds and
service Bodies on
Cab & Chassis trucks

Service & skirted Body install Parts Kits

wiring

Harness

parts needed with lights in headboard

- (1) MAR-200 rear Harness
- (1) MAR-750 Pigtail
- (1) MAR-201 Headboard Harness

parts needed without lights in headboard

- (1) MAR-200 rear Harness
- (1) MAR-750 Pigtail
- (1) MAR-400 I.D. Light Harness

Truck specific adapter can be purchased see chart Page 5

Mud Flap Kits

- MK-MF-DW-05** For Dual wheel trucks
- MK-MF-SW-01** For single wheel trucks

Service body Cab & Chassis Mounting Kit

- **MK-CC-200 & MK-GN-100 & MK-RH-100** for Body with Both Hitches
- **MK-CC-201 & MK-RH-100** for Body with Rear Hitch
- **MK-CC-202** for Body with No Hitch

IF this is a 2020 or newer ford use mounting kit MK-RH-101 instead of MK-RH-100

Cab & Chassis Trucks step by step install Guide

Mounting Kit for chassis cab. Use MK-CC-200 if you have a martin Rear Hitch and martin Gooseneck Hitch. MK-CC-201 use if you have a martin rear hitch. MK-CC-202 if you have no martin Hitches

Step 1: Complete all the wiring on the service body before setting on the truck frame.

Step2: Set service body on truck frame. ****Center unit, side / side and Front to back****

- **On the rear** of the bed there needs to be a solid shear plate. On Chassis Trucks this needs to be bolted through the shear plate and into the frame rails of the service body. This can either be done with a Plate #FB-HP-008 or a Martin Rear hitch plate see drawing Next pages.
- **The mid- section** needs to be mounted using a spring mount part # FB-GM-200 or a slip joint for flexibility of the bed see next pages for drawing on this . *Note: If you bolt the middle of the body down solid the truck frame, the body will crack and this will void the warranty*
- **The front** of the body needs to be mounted with springs mounts And a bed guide Part# FBP-023. On a chassis truck this is (2)FBP-GM-200 L-brackets, one bolts to the truck frame the other to the body, then a bolt going thru a coil spring is used to hold the body in place. On a box delete truck, you use the bolt and coil spring and bolt thru the factory bed mounting bracket.
Note: On both units you tighten the nut on the bolt till the spring slightly compresses.

Ship-out kits: Include: mounting bolts and hardware listed in parts list below, wiring harness, standard lighting.

- Customer is responsible to comply with federal regulations.

Step 3: Connect the wiring harness pigtail to the truck (Refer to Wiring diagram) some models are hardwired to the truck and some have direct adapter plugs.

Step 4: Install Mud flaps *Note: These are not required by law and are not always provided by dealers.* Mudflap Kits For **(Dual wheel truck Part# MK-MF-DW-05)** **(single wheel Part# MK-MF-SW-01)**

Step 5: Connect Fuel Filler hose, Re-use existing filler neck from old pickup bed, cut the pipe approx. 4'' from the base from the flange. Bolt the filler neck to the box welded on the side of the bed. Then install a new hose to the fuel tank (New hose not included unless special ordered)

Step 6: It is highly recommended to have a local State inspection Mechanic inspect your truck before being put in service.

Bumper requirements: A bumper needs to be added if original truck bumper is removed, maximum of 30" off the ground, 18" in From Each Side, and 24" Max under bed from tail.

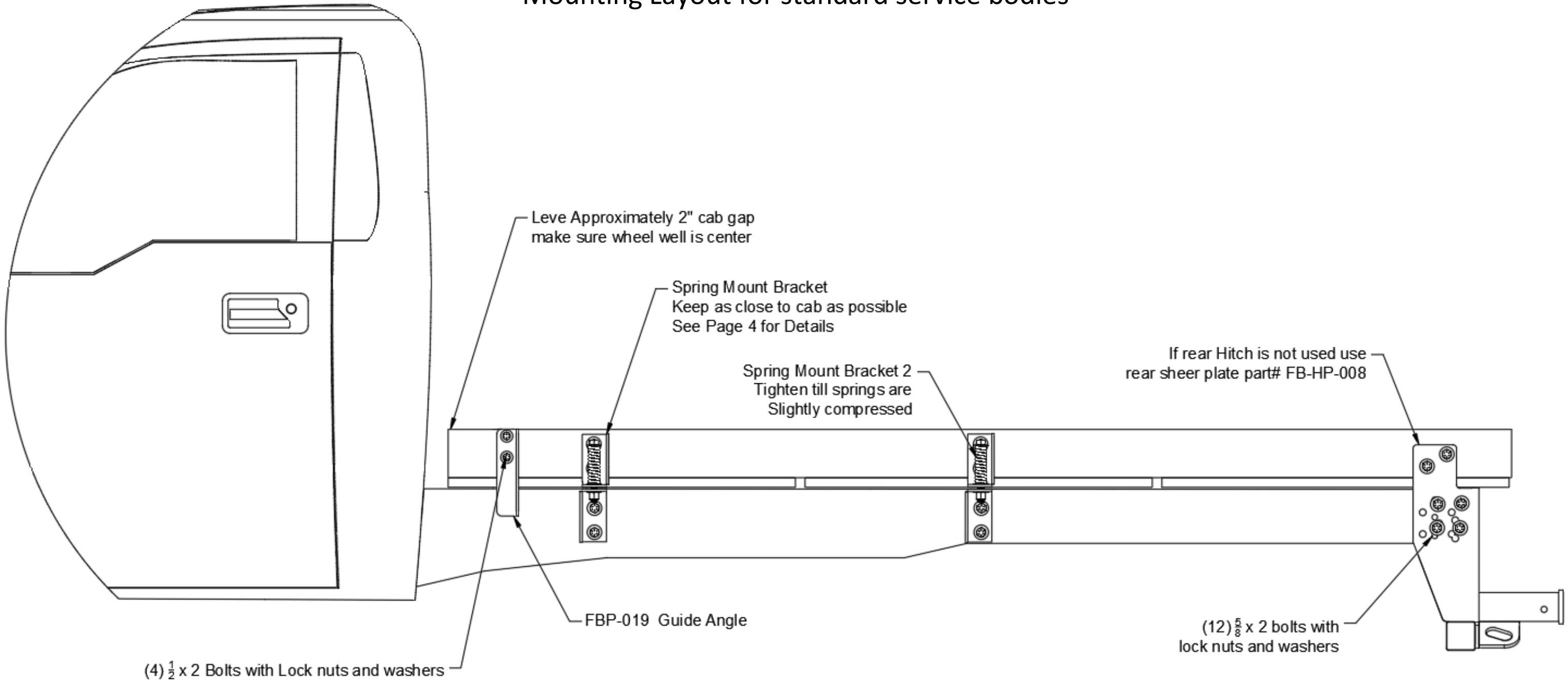
Hitches: Refer to Installation guide Step 2. (If hitch supplied by Martins).

Backup Sensors: Relocate sensors to rear Bumper on bed.
(Contact Martins if needed).

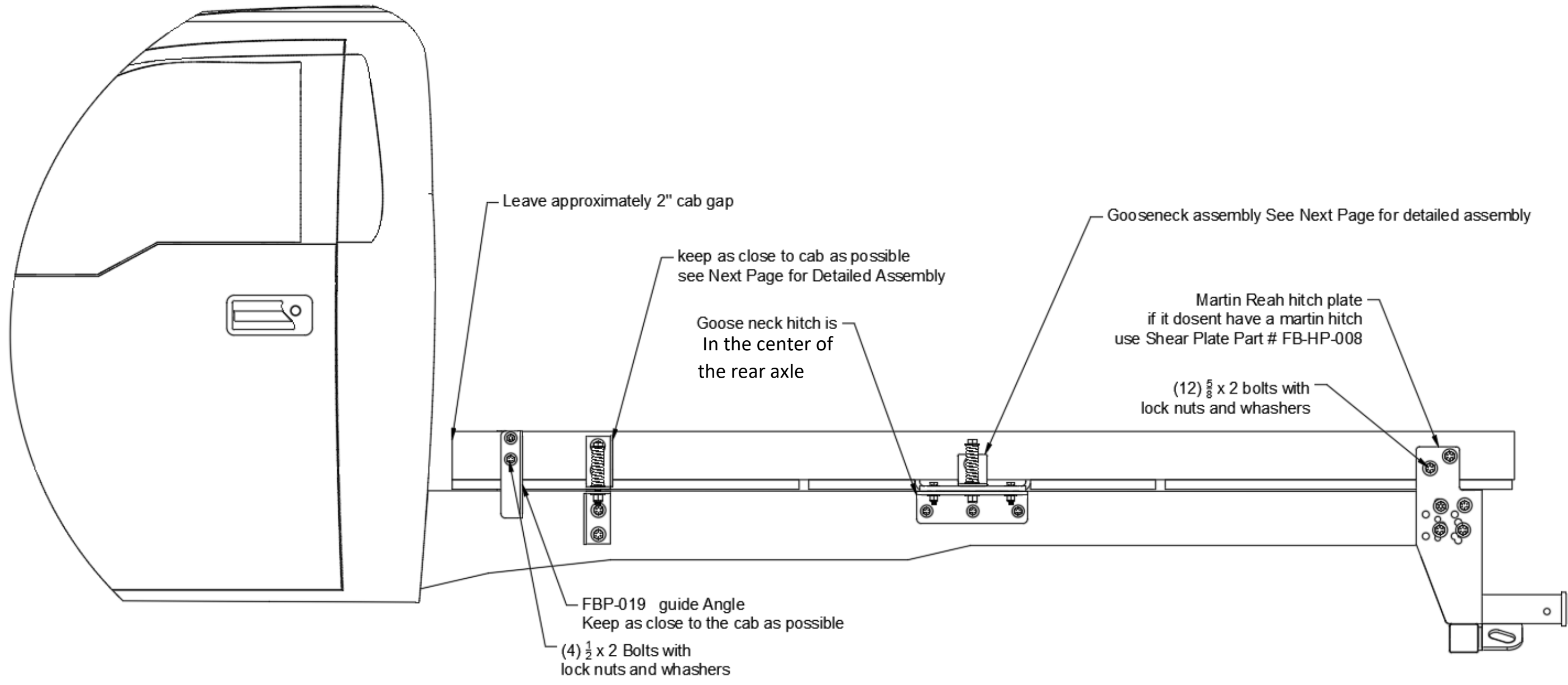
Backup camera: Camera will need to be relocated above the license plate on light skirt. Professional advice is recommended if wires need extended. (contact martins if needed).

Disclaimer: These Instructions are a general guide. Martins Truck Bodies is not responsible for the installation of your truck body. GM, Ford & Dodge frames are all different. It is highly recommended to have your truck looked at by a local state inspection garage after you have completed the installation.

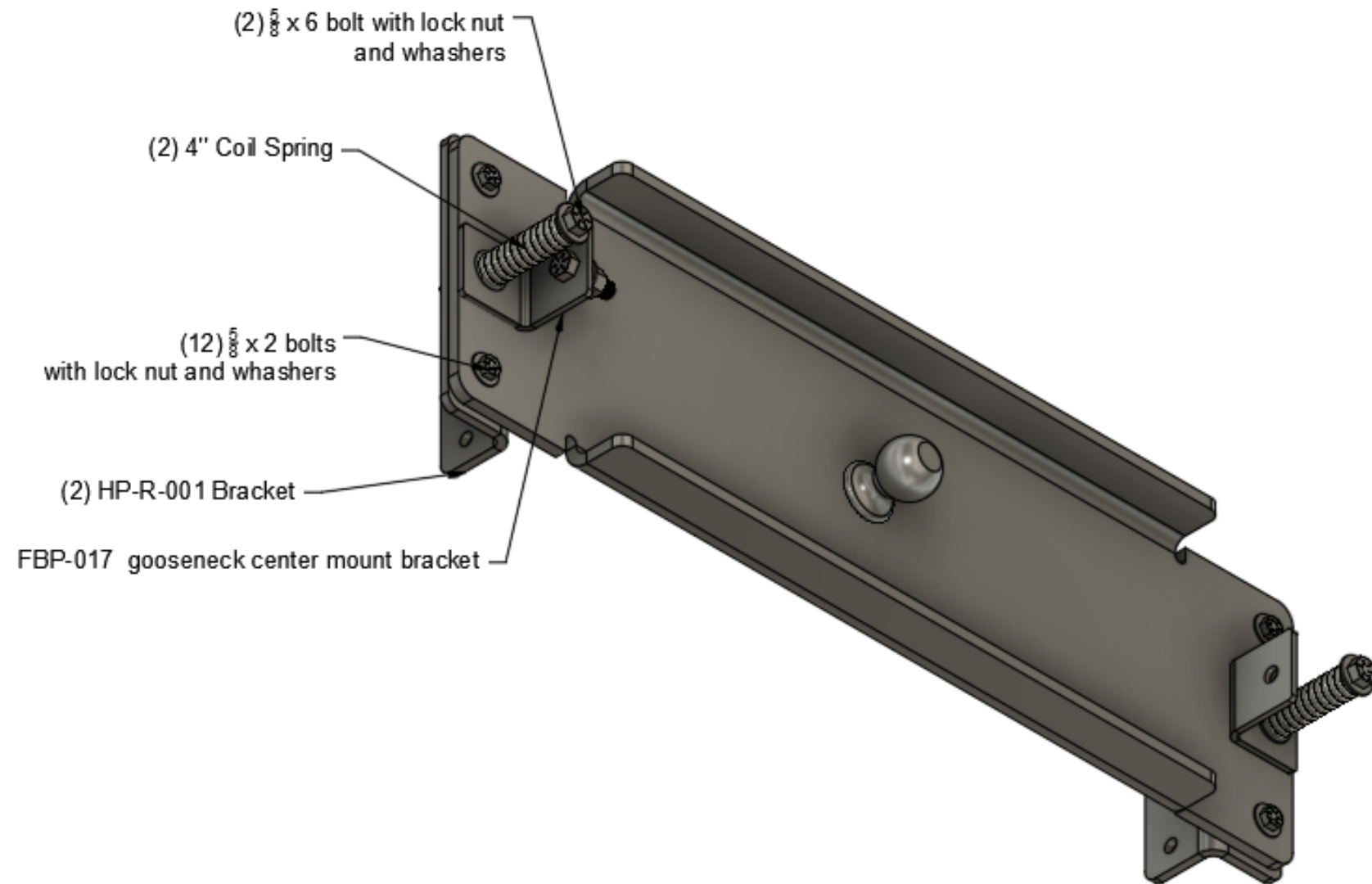
Mounting Layout for standard service bodies



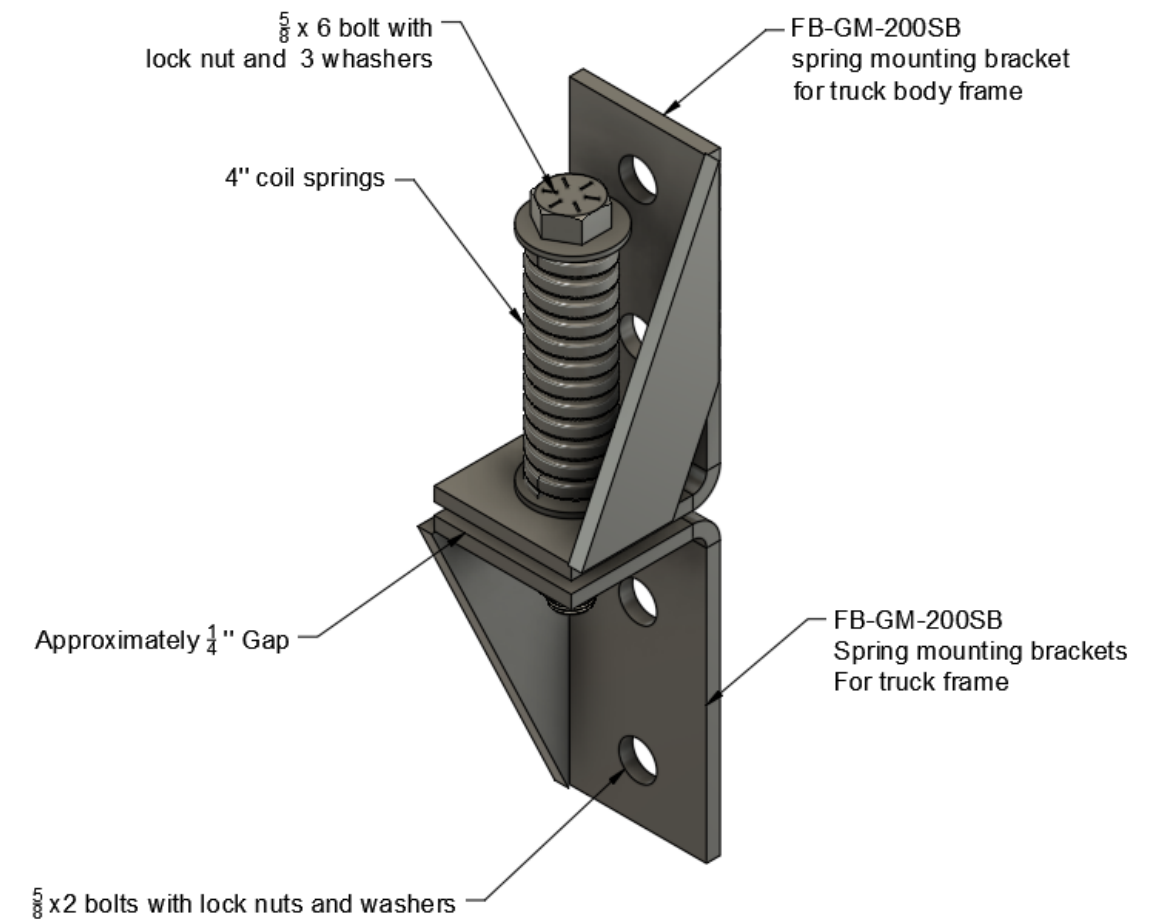
Mounting Layout for Gooseneck service bodies



Gooseneck Hitch assembly



Front and center flex mount assembly



Warranty:

All Martins flatbeds, **EcoMax** Service bodies, Workmanship and material defects will be warranted for a period of three (3) years from the date of initial purchase.

- A one (1) year warranty will be on all components such as lighting, latches and addition hardware if a defect is found. The manufacture must be given a reasonable amount of time to correct the issues.
- Failure to follow the provided instructions on installing the bed will void all warranty options.
- Warranty repairs do not include the removing of aftermarket accessories or items that were not part of the original product.
- Truck bodies are rated to GVWR of the truck and the pay load that the truck can haul. If rated capacity is exceeded or improper use of the product will **not** be covered under warranty
- All warranty claims must be vetted and or authorized by Martins Truck Bodies.

➤ General Maintenance Instructions

- **ALWAYS** wash your service body after any after major storm in the winter months to remove the road chemicals and salt. This will help in keeping your unit from being stained. If possible, a good wax should be used on your service body to help keep it looking good and protect the aluminum finish.
- **ALWAYS** lubricate hinges and rotating parts with a light machine oil at least once a year. This will insure they will work properly.
- **ALWAYS** check the Painted doors to see if they were damaged or chipped. If they were, it is recommended to repair these areas to prevent corrosion from lifting the painted parts.
- **ALWAYS** check the door seals to ensure that they have not been damaged and are still adhered to box for a water tight seal. To clean them wipe them down with mild soapy water and dry them off.
- For units with Keyless Entry, **NEVER** leave off the electrical cover for units with Keyless Entry, located on the passenger side front compartment and each door lock cover. Check to make sure that electrical connectors are still tight.
- **ALWAYS** check the rotary latches to make sure that they are working correctly. At least every 4 to 6 months you should check and see if they need lubrication to the moving parts. The doors can be made tighter or looser against the seal by adjusting the roller on the latch. Loosen the bolt holding the roller and move it in or out for proper fit and retighten it.

Truck Body wiring info

Truck Body Wiring Color Codes

Brown - Marker Lights

White - Ground

Red - Reverse

Yellow - Left Turn

Green - Right Turn

Black - Left Brake

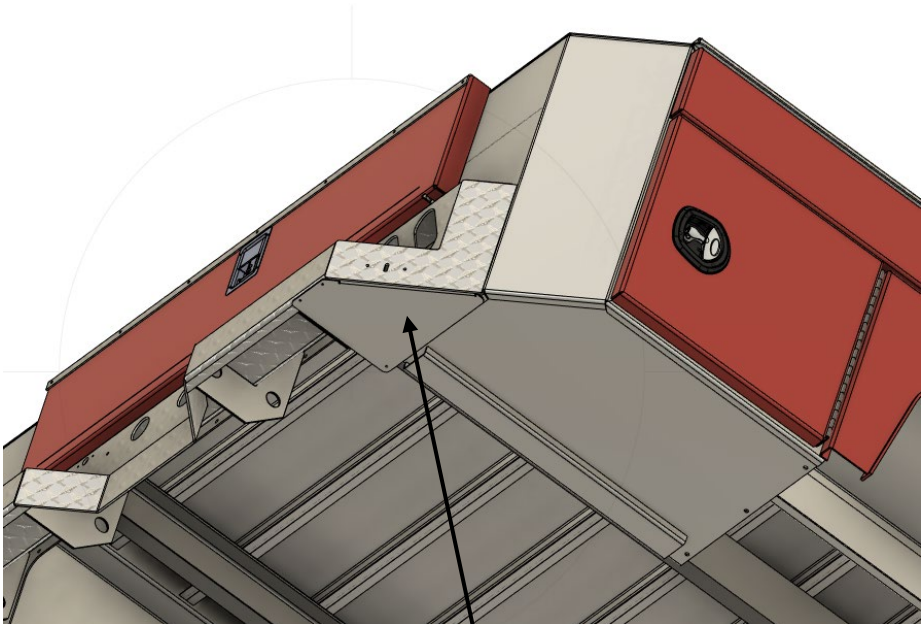
Blue - Right Brake

Truck Adapters, Plugs				
*****This list is for Cab & Chassis Trucks*****				
	Ford	Dodge / Ram	Chevy, 3500	chevy 4500, 5500, 6500
2010	MAR-904	MAR-902	N/A	
2011	MAR-904	MAR-902	N/A	
2012	MAR-904	MAR-902	N/A	
2013	MAR-904	MAR-902	N/A	
2014	MAR-904	MAR-902	N/A	
2015	MAR-904	MAR-902	MAR-901-2	
2016	MAR-904	MAR-902	MAR-901-2	
2017	MAR-904	MAR-902	MAR-901-3	
2018	MAR-904	MAR-902	MAR-901-3	
2019	MAR-904	MAR-902	MAR-901-3	
2020	MAR-904	MAR-902	MAR-901-6	MAR-901-4
2021			MAR-901-6	MAR-901-4

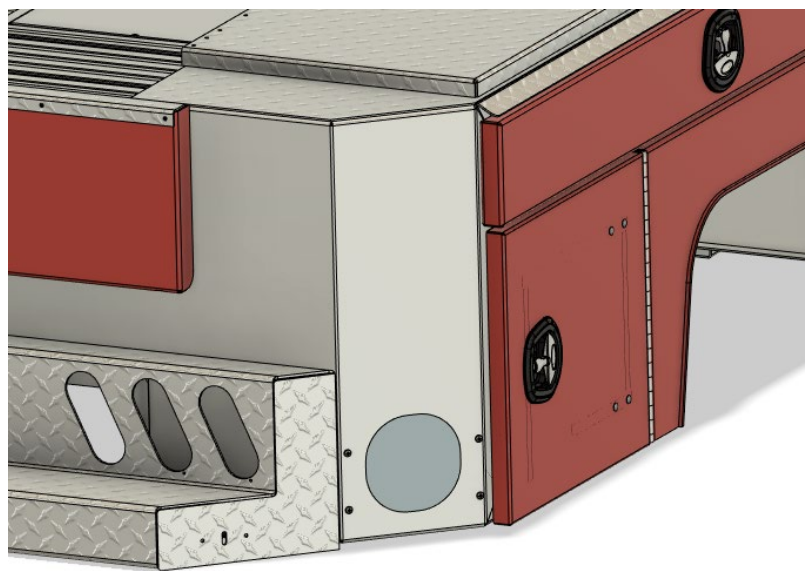
Note: If the your Brake Lights & Turn Signal are in one wire on your truck, Left –side Yellow & Black and Right – Side Green & Blue will need to be spliced together.

Disclaimer: These wiring Color Codes are only suggestions. Martin Truck Bodies is not responsible to properly wire your truck body. If any problems or issues occur, contact a certified Mechanic.

Additional Parts for your service body



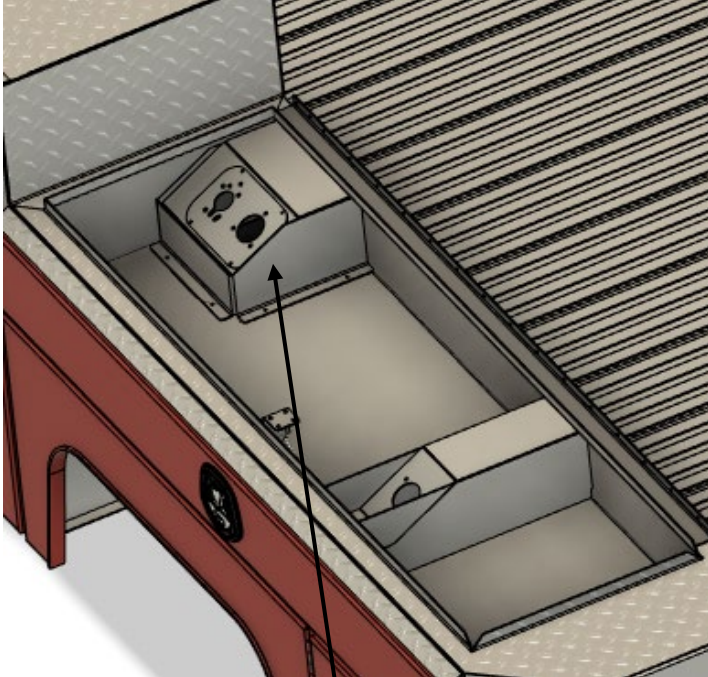
Heat shield for wires in bumper
For standard service #body SVBD-070
For gooseneck service body #SVBD-071



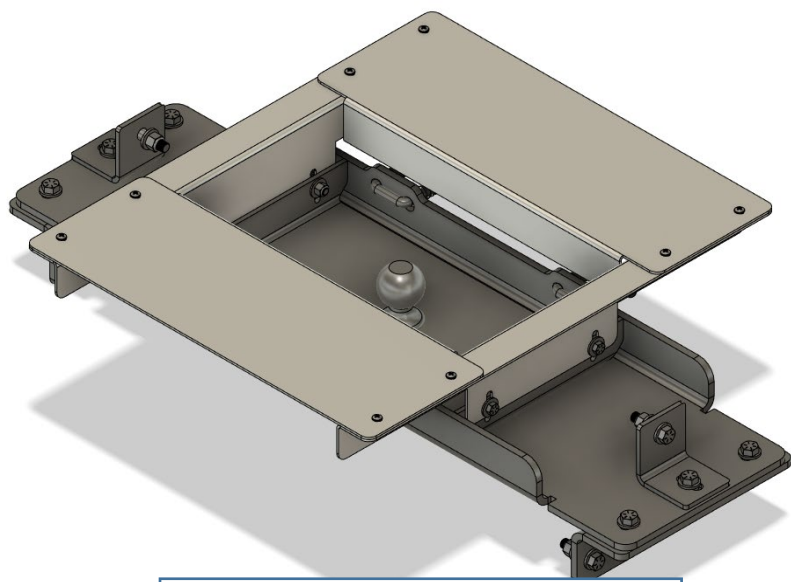
Blind Spot Monitor window



Bolt on Camera box



GNSB-FB100
Additional fuel or DEF filler box



FBAP-026
Gooseneck Hole box cover