



## Install and User Manual



Skirted Flatbeds and  
service Bodies on  
box Delete trucks



# Service & skirted Body install Parts Kits

## wiring Harness

### parts needed with lights in headboard

- (1) MAR-200 rear Harness
- (1) MAR-750 Pigtail
- (1) MAR-201 Headboard Harness

### parts needed without lights in headboard

- (1) MAR-200 rear Harness
- (1) MAR-750 Pigtail
- (1) MAR-400 I.D. Light Harness

Truck specific adapter can be purchased see chart Page 5

## Mud Flap Kits

- MK-MF-DW-05** For Dual wheel trucks
- MK-MF-SW-01** For single wheel trucks

## Service body Box Delete Mounting Kit

- **MK-D-200** for 1998-2020 Dodge/Ram
- **MK-GM-200** for 1998-2020 Chevy-GMC
- **MK-F-200** for 1998-2016 Fords
- **MK-F-201** For 2017-2020 fords

### Gooseneck Hitch:

\* Martin Universal Gooseneck Hitch Plate    \* Ram 2013-current Gooseneck plate    \*Ford 2017-current Gooseneck plate

(2) Angle Mounting Brackets for Martin Universal Gooseneck Hitch Plate.

("HP-R-001" 2012-2002 Ram) ("HP-F-003" 2016 older ford) ("HP-GM-001" 2010-2019 GM) ("HP-GM-003" 2000-2009 GM) ("HP-GM-005 2020" newer GM 5500)

- ✓ **FBP-034 Center Mount**
- ✓ **MK-GN-100 Bolt**

# Pickup Trucks step by step install Guide

**Step 1:** Pre fit service body on pickup, approx. 2'' Gap between truck cab, and measure off truck frame to center bed side to side.

**Step 2:** Use a Sharpie marker and mark the two front and rear bolt holes that the original pickup bed bolted through This does not apply to 2016 and prier front mounts.

**Step 3:** Remove the service body from the truck and drill the holes that you marked on the bed mounts.

**Step 4:** Complete all the wiring on the service body (Ready to connect to truck)

**Step 5:** Set Service body back on Truck with spacers (see drawing on page3), in the front and back. Bolt through the (4) holes that you drilled; the front mounts need coil springs for flexing (see page 3). In the center of the flatbed Martins supplies (1) additional brace FBP-021 per side, that will need to be added. Bolt it to the Track with 2 carriage head bolts, this bracket is adjustable for most pickup trucks. If it has a gooseneck plate, go behind it or in front of the plate and extend down through the truck frame. You will need to drill a hole through the truck frame where the brace extends, in box frames use a self-threading bolt to see page 4.  
*Note: On both units you tighten the nut on the bolt till the spring slightly compresses.*

**Step 6:** Connect the wiring harness pigtail to the truck (Refer to Martins Wiring diagram Page 5) some models are hardwired, and some have plugs.

**Step 7:** Install Mud flaps, *Note: These are not required by law and are not always provided by dealers.*

**Step 8:** Connect Fuel Filler hose, reuse existing filler neck from old pickup bed, cut the pipe approx. 4'' from the base of the flange. Bolt the filler neck to the box welded in the box over the axle. Then install a new hose to the fuel tank. (New hose not included available at any auto parts store)

**Step 9:** It is highly recommended to have a local State inspection Mechanic inspect your truck before being put into service.

**Bumper requirements:** A Bumper need to be added if original truck bumper is removed, maximum of 30" off the ground, 18" in From Each Side of frame rail, and 24" Max under bed from tail.

**Hitches:** (Refer to Installation guide if hitch supplied by Martins see page 4)

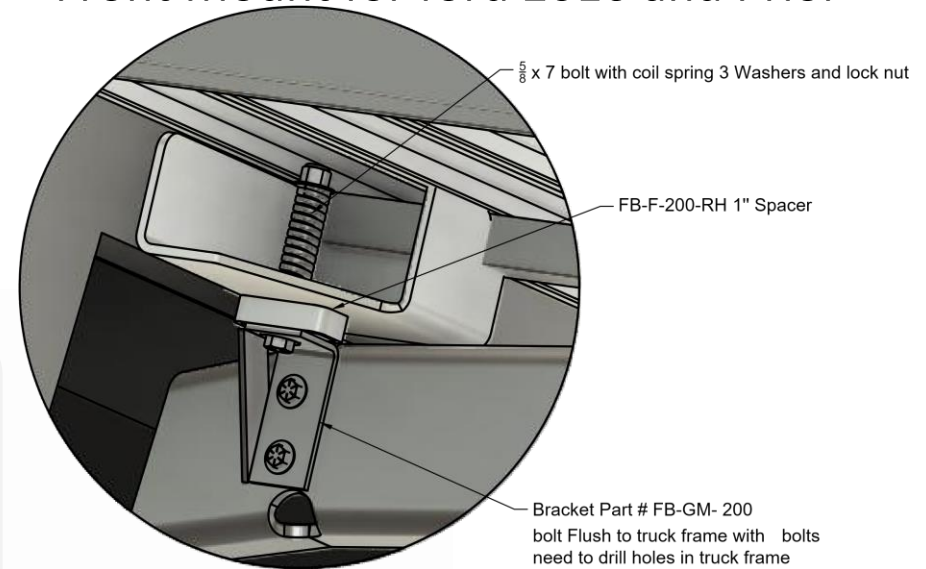
**Backup Sensors:** Relocate sensors to the bumper on your service body. (Contact Martins)

**Backup camera:** Camera will need to be relocated to the center of your bumper under the id lights. Professional advice is recommended if wires need to be extended. Additional mounting bracket may be needed for the mounting of the camera.

**Disclaimer:** These Instructions are just a general guide. Martins Truck Bodies is not responsible for the installation of your truck body. GM, Ford & Dodge frames are all different. It is highly recommended to have your truck looked at by a local state inspection garage after you have completed the installation.

# Service Body mounting Diagram

## Front Mount for ford 2016 and Prior



### Center mount (FBP-023)

If the truck has a gooseneck hitch move mount to the side. Drill hole and bolt to the flat bar mount that's welded to the bed with 5/8 bolt with 4" spring, locknut and 3 washers.

### Rear Mount

bolt down to were existing bed bolted to truck with 5/8 bolts, washers, and lock nuts rear spacers as Listed

Chevy- None

Ram - None

Ford 2016 older - ¼ spacer (FB-F-210)

Ford 2017 Newer - ¾ spacer (FB-F-220)

### Front Mounting

bolt it down to were existing bed bolted (except 2016 older ford see diagram) with 5/8 bolts and 4" coil spring and lock nut some trucks need spacers between truck and bed see below

Front Spacer

GM-None

Ford 2016 & older - 1" spacer (FB-F-200-RH)

Ford 2017 & newer -None

Ram - ½ spacer (Part# FB-200)

Center Mount (FBP-023) Drill 2 holes in truck frame and Bolt with ½ bolts or if it's a tubing frame use self-threading bolt Supplied in the install kit.

Truck Adapters, Note: These adapters are not included in the body cost and have to be purchased separately. If trucks are marked as N/A a MAR-905 hardwire adapter is used.

## Truck Body wiring info

### Truck Body Wiring Color Codes

Brown - Marker Lights

White - Ground

Red - Reverse

Yellow - Left Turn

Green - Right Turn

Black - Left Brake

Blue - Right Brake

Note: If your Brake Lights & Turn Signal are in one wire on your truck, Left side Yellow & Black and Right – Side Green & Blue will need to be spliced together.

**Disclaimer:** These wiring Color Codes are only suggestions.

Martin Truck Bodies is not responsible to properly wire your truck body. If any problems or issues occur, contact a certified Mechanic.

\*\*\*\*\*This list is for the Box Delete Trucks\*\*\*\*\*

Ford	Dodge / Ram	Chevy / GMC
2000 MAR-908	N/A	MAR-900, MAR-901, MAR-901-1
2001 MAR-908	N/A	MAR-900, MAR-901, MAR-901-1
2002 MAR-908	N/A	MAR-900, MAR-901, MAR-901-1
2003 MAR-908	N/A	MAR-900, MAR-901, MAR-901-1
2004 MAR-908	N/A	MAR-900, MAR-901, MAR-901-1
2005 MAR-908	N/A	MAR-900, MAR-901, MAR-901-1
2006 MAR-908	N/A	MAR-900, MAR-901, MAR-901-1
2007 MAR-906 or MAR-908-01	N/A	MAR-900, MAR-901, MAR-901-1
2008 MAR-906 or MAR-908-01	N/A	MAR-900, MAR-901, MAR-901-1
2009 MAR-906 or MAR-908-01	N/A	MAR-900, MAR-901, MAR-901-1
2010 MAR-906 or MAR-908-01	N/A	MAR-900, MAR-901, MAR-901-1
2011 MAR-906	N/A	MAR-900, MAR-901, MAR-901-1
2012 MAR-906	N/A	MAR-900, MAR-901, MAR-901-1
2013 MAR-906	N/A	MAR-900, MAR-901, MAR-901-1
2014 MAR-906	N/A	MAR-900, MAR-901, MAR-901-1
2015 MAR-906	N/A	MAR-901-2
2016 MAR-906	N/A	MAR-901-2 or MAR-901-3
2017 MAR-907	N/A	MAR-901-3
2018 MAR-907	N/A	MAR-901-3
2019 MAR-907	MAR-902-1 or MAR-905	MAR-901-3
2020 MAR-907-1 (See Note #1)	MAR-902-1 or MAR-905	MAR-901-5
2021 MAR-907-1 (See Note #1)	MAR-902-1 or MAR-905	MAR-901-5

\*\*\*\*\*This list is for Cab & Chassis Trucks\*\*\*\*\*

Ford	Dodge / Ram	Chevy, 3500
2010 MAR-904	MAR-902	N/A
2011 MAR-904	MAR-902	N/A
2012 MAR-904	MAR-902	N/A
2013 MAR-904	MAR-902	N/A
2014 MAR-904	MAR-902	N/A
2015 MAR-904	MAR-902	MAR-901-2
2016 MAR-904	MAR-902	MAR-901-2
2017 MAR-904	MAR-902	MAR-901-3
2018 MAR-904	MAR-902	MAR-901-3
2019 MAR-904	MAR-902	MAR-901-3
2020 MAR-904	MAR-902	MAR-901-6
2021		MAR-901-6

4500, 5500, 6500  
MAR-901-4  
MAR-901-4

Note#1 Ford, King Ranch and possibly higher end packages, You will have to use the (High Mount Stop Wire "Yellow w/ Green stripe) and bypass the MAR-907-1 adapter and splice into the Black and Blue wires on the USA Body Harness \*\*\*\*\*This is only for the brake light function\*\*\*\*\*

## Warranty:

All Martins flatbeds, \*\*EcoMax\*\* Service bodies, Workmanship and material defects will be warranted for a period of three (3) years from the date of initial purchase.

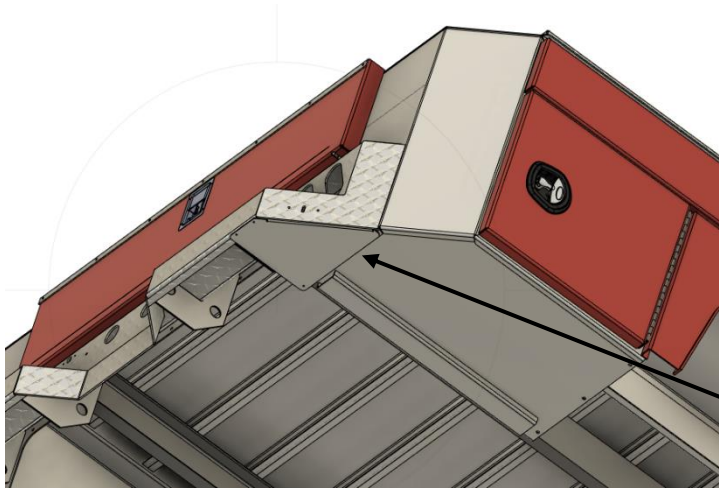
- A one (1) year warranty will be on all components such as lighting, latches and addition hardware if a defect is found. The manufacturer must be given a reasonable amount of time to correct the issues.
- Failure to follow the provided instructions on installing the bed will void all warranty options.
- Warranty repairs do not include the removing of aftermarket accessories or items that were not part of the original product.
- Truck bodies are rated to GVWR of the truck and the pay load that the truck can haul. If rated capacity is exceeded or improper use of the product will **not** be covered under warranty
- All warranty claims must be vetted and or authorized by Martins Truck Bodies.

### ➤ General Maintenance Instructions

- **ALWAYS** wash your service body after any after major storm in the winter months to remove the road chemicals and salt. This will help in keeping your unit from being stained. If possible, a good wax should be used on your service body to help keep it looking good and protect the aluminum finish.
- **ALWAYS** lubricate hinges and rotating parts with a light machine oil at least once a year. This will insure they will work properly.
- **ALWAYS** check the Painted doors to see if they were damaged or chipped. If they were, it is recommended to repair these areas to prevent corrosion from lifting the painted parts.
- **ALWAYS** check the door seals to ensure that they have not been damaged and are still adhered to box for a watertight seal. To clean them wipe them down with mild soapy water and dry them off.
- For units with Keyless Entry, **NEVER** leave off the electrical cover for units with Keyless Entry, located on the passenger side front compartment and each door lock cover. Check to make sure that electrical connectors are still tight.
- **ALWAYS** check the rotary latches to make sure that they are working correctly. At least every 4 to 6 months you should check and see if they need lubrication to the moving parts. The doors can be made tighter or looser against the seal by adjusting the roller on the latch. Loosen the bolt holding the roller and move it in or out for proper fit and retighten it.



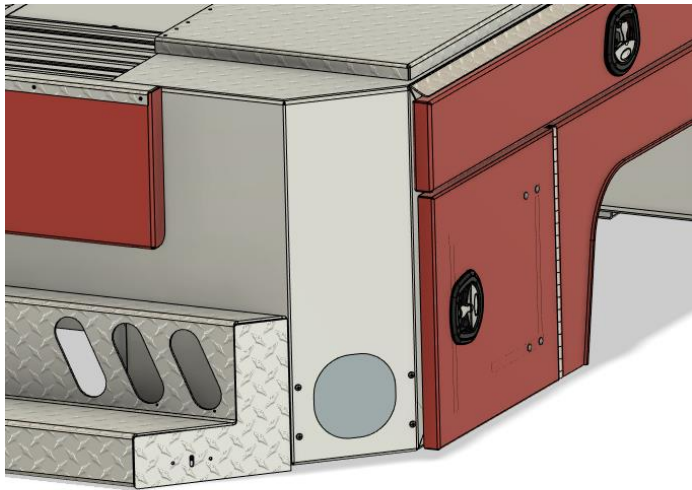
## Additional Parts for your service body



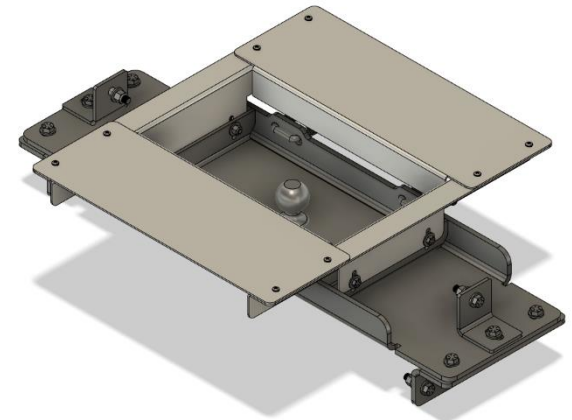
Heat shield for wires in bumper  
For standard service #body SVBD-070  
For gooseneck service body #SVBD-071



Bolt on Camera box



Blind Spot Monitor window



Gooseneck Hitch cover